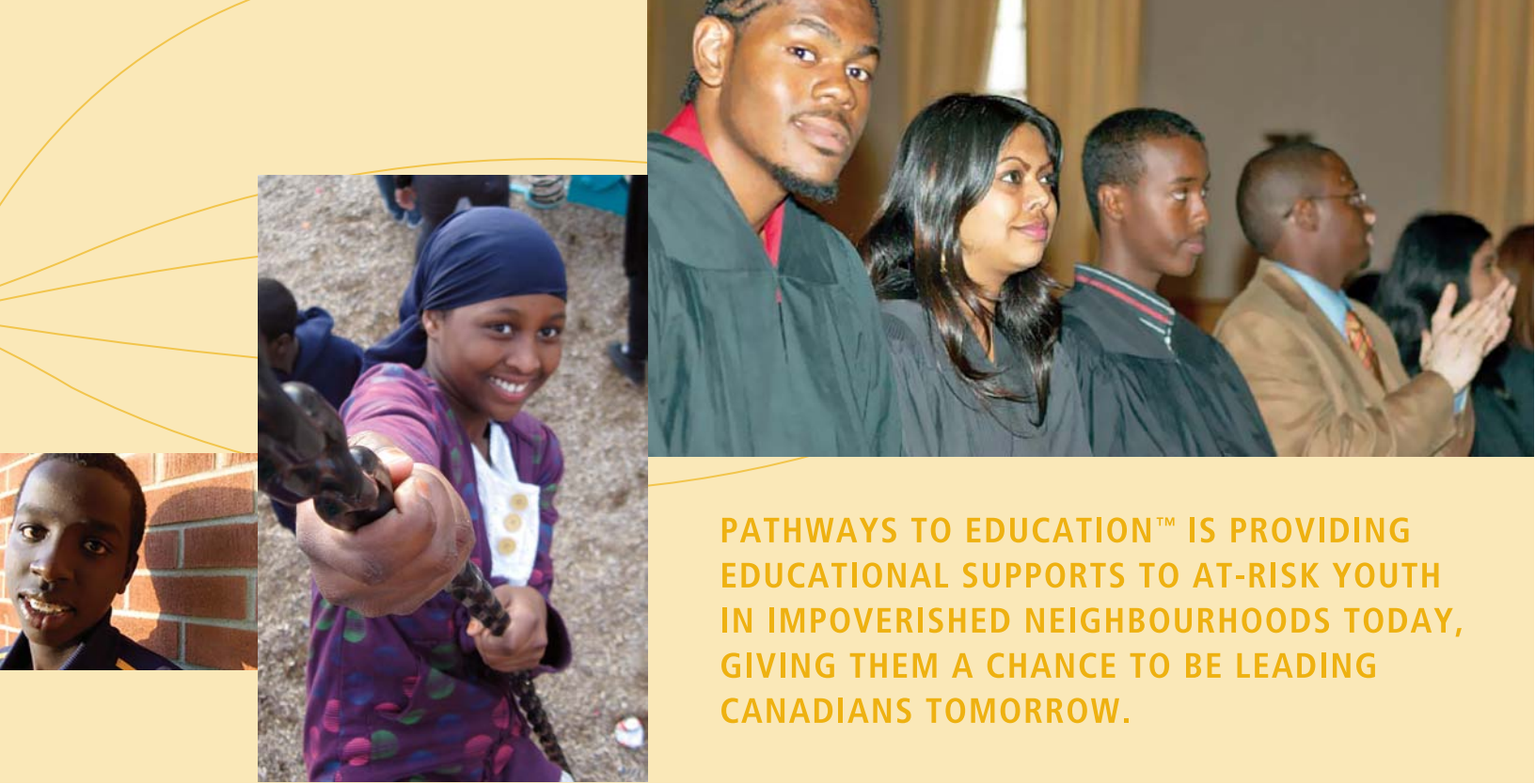


pathways

WWW.PATHWAYS TO EDUCATION.CA

Education has the power  
to change everything.





**PATHWAYS TO EDUCATION™ IS PROVIDING EDUCATIONAL SUPPORTS TO AT-RISK YOUTH IN IMPOVERISHED NEIGHBOURHOODS TODAY, GIVING THEM A CHANCE TO BE LEADING CANADIANS TOMORROW.**

Pathways to Education is closing the “achievement gap” between the haves and the have-nots by lowering high school dropout rates of at-risk youth and preparing them for post-secondary education and meaningful employment. By investing in our most vulnerable youth – and the communities they come from – we are reducing the harmful effects of poverty and preparing better students, employees and citizens for the future. This will be the best return on investment any community or government can make, resulting in a healthier, more prosperous and more competitive nation.

Pathways has helped reduce high school dropout rates from a pre-Pathways rate of **56% to as low as 10%\*** for active participants in the program. The program has also seen an increase in the number of high school graduates going on to post-secondary education of 20% to 80%.

The program is now operating in eight sites in Ontario and Quebec and preparations are being made to expand the program and its impact throughout Canada.

*Our goal is to ensure that all youth – regardless of their social or economic standing – regardless of where they live or were born – graduate from high school and are well equipped to pursue post-secondary education and meaningful employment.*

## The Issue

### Studies show that dropouts:

- tend to be unemployed or earn lower wages, thus paying little or no taxes
- tend to experience higher rates of poverty, thus drawing most from social assistance
- tend to commit more crime and threaten the safety of our neighbourhoods, thus putting greater strains on our justice system
- tend to have higher incidents of illness, drug-use, and teenage pregnancy, thus putting greater strains on our health care system

How big is the problem? Quebec reports a 30% dropout rate, Ontario is at 23% and rates are estimated to be as high as 40%, 50% and even higher in communities all across the country.

## What Are The Experts Saying?

**Boston Consulting Group** reports that \$1 invested in Pathways generates a \$25 return to society in terms of decreased social costs and an increased tax base.

**McKinsey Company** in its report on student retention and success in Quebec identifies Pathways as one of four programs most likely to reduce poverty and dropout rates in the Province of Quebec.

Gay McDougall, **United Nations** Independent Expert on minority issues, highlights Pathways as one of the most outstanding educational models seen during her 2009 visit to Canada.

*“This is one of the most important programs to take shape in Canada in recent memory. What is wonderful is that with very low bureaucratic weight it has a very direct and fast impact on young people in trouble.”*

*John Ralston Saul, Novelist*

\*Results may vary year to year and community to community.



HEATHER MCLEOD GRANT, AUTHOR OF THE BOOK "FORCES FOR GOOD" AND PARTNER AT THE MONITOR INSTITUTE SAYS "NEVER BEFORE HAVE WE SEEN SUCH IMPRESSIVE RESULTS".

## The Program

There are 4 pillars to the Pathways program which collectively "wrap" students in supports deemed critical to helping them complete their education, make the transition into a successful career, and become contributing members of their community.



Pathways partners with local agencies in high-need communities and helps them build the knowledge and capacity required to run the program. Pathways enters into contracts with students, parents and schools to establish clear goals and expectations and to promote a shared responsibility for student and community success.

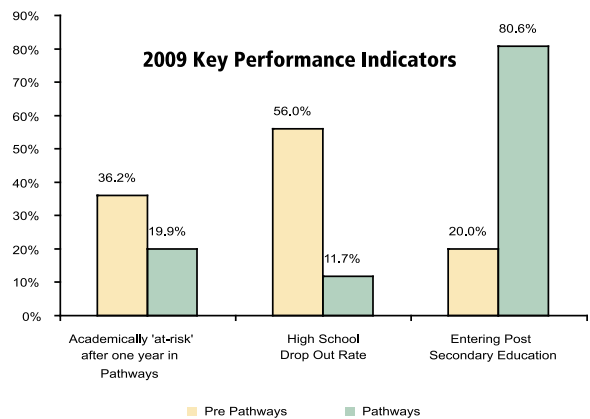
## The Results\*

The Pathways program has been instrumental in decreasing the dropout rates in Toronto's Regent Park community from its pre-program rate of 56% to as low as 10%\* today for those completing the program.

The program has enrolled 93% of all eligible students in the community, and has seen more than 80% of its graduates going on to post-secondary education, quadrupling the pre-Pathways rate of 20%.

Pathways graduates going on to post-secondary school are staying in school at a rate that is 4 times greater than the national average.

\*Results may vary year to year and community to community.



## The Social Return on Investment

In 2006 the Boston Consulting Group reviewed the Pathways to Education program and found that for every \$1 invested in Pathways, society gains a \$25 return on investment. This return on investment is based on conservative calculations taking into consideration increased tax revenues and decreased social costs expended on health care, unemployment insurance and the criminal justice system.

## New Program Sites

Based on the success of Pathway's Regent Park program, 5 new sites were started in Ontario and Quebec in 2006.

Leading indicators from these sites (based on absenteeism rates and credit accumulation) indicate that they will have results that are at least as good, if not better, than the initial site. This demonstrates that the program can indeed be replicated to other communities and establishes the foundation for future growth.



*“Growing up in Regent Park can be challenging – avoiding the potential influence of drugs and crime...Pathways is kind of like your parents. It can be tough...there are high expectations, and we must always do our very best, in return we are supported through whatever trials and challenges we face”.*

*Mohammed,  
Pathways Graduate*

## You Have the Power to Change Everything

Every year, thousands of Canadian students make the life-altering decision to drop out of high school. Statistics show that in some of the country’s most vulnerable neighbourhoods, up to 60 percent of students do not graduate high school, taking a toll on our communities, health and justice system and economy.

Pathways to Education Canada is focused on solving this problem by lowering high school dropout rates, increasing access to post-secondary education and closing the “achievement gap”. The program has had unprecedented success in the eight Canadian communities it serves, translating into enormous savings in health care, correctional and social service expenditures.

You may see this work as a moral imperative: about creating a level playing field and giving back to those who have been less fortunate. Or, you may believe that supporting Pathways is a good investment in the health, safety and prosperity of our cities and our country. Whatever your reason, you can be confident that Pathways, which was recently named one of the country’s most effective and efficient charities by Charity Intelligence Canada, will ensure your donation helps create a brighter future for these students, and a brighter future for Canada as a whole.

## Board of Directors

**Samuel L. Duboc – Chairman**  
President and Managing Partner  
EdgeStone Capital Partners

**Robert J. Wright – Vice Chairman**  
President, Edinglen Holdings Inc.

**Diana R.E. Moeser – Secretary**  
Urban Health Associates and Adj. Professor  
University of Toronto

**Jane Nyman – Treasurer**  
Chartered Accountant

**Ruth Grant**  
Chair  
Healthy Kids International

**Greg Kiessling**  
President, Up Capital Ltd.

**Jay Lefton**  
Senior Partner, Ogilvy Renault LLP

**Jim Meekison**  
Chairman and CEO, Trimin Capital Corp.

**David Reeve – Chairman, Foundation Cabinet**  
President & Founder, DistribuTech Inc.

**Hon. Monte Solberg**  
Senior Advisor, Fleishman-Hillard Canada

**David Hughes – Ex-officio**  
President & CEO, Pathways to Education Canada

## Foundation Cabinet

**David Reeve – Chairman, Foundation Cabinet**  
President & Founder, DistribuTech Inc.

**Samuel L. Duboc – Chairman, Board of Directors**  
President and Managing Partner  
EdgeStone Capital Partners

**Evan Solomon**  
CBC Broadcaster,  
Journalist and Author

**Carolyn Acker – Founder, Pathways to Education Canada**

**Robert Chernecki**  
Assistant to the President  
CAW-Canada

**Heather Chiasson**

**Thomas Gerginis**  
Wealth Advisor & Portfolio Manager  
ScotiaMcLeod

**Barry Gordon**  
President & CEO  
First Asset Funds Inc.

**Stephen Herbert**  
Health Care Consultant  
HerbertAssociates Health Care Consultants

**Julie A. Lee Harrs**  
President and COO  
Uranium Star Corp.

**Jay Lefton**  
Senior Partner  
Ogilvy Renault LLP

**James Little**  
Chief Brand and Communications Officer  
RBC Financial Group

**Nancy Love**

**Fiona J. MacFarlane**  
Managing Partner, People  
Ernst & Young LLP

**Danny McCarthy**  
Vice Chairman  
CIBC World Markets

**Ron McLaughlin**  
Managing Director  
Chapman Inc.

**Vincent Mercier**  
Lawyer, Davies Ward Phillips & Vineberg LLP

**Andrew Pickersgill**  
Principal, McKinsey & Company Canada

**Rachel Renaud**  
Executive Director  
Fondation Roasters Foundation

**Sean Smith**

**Louise Tymocko**